

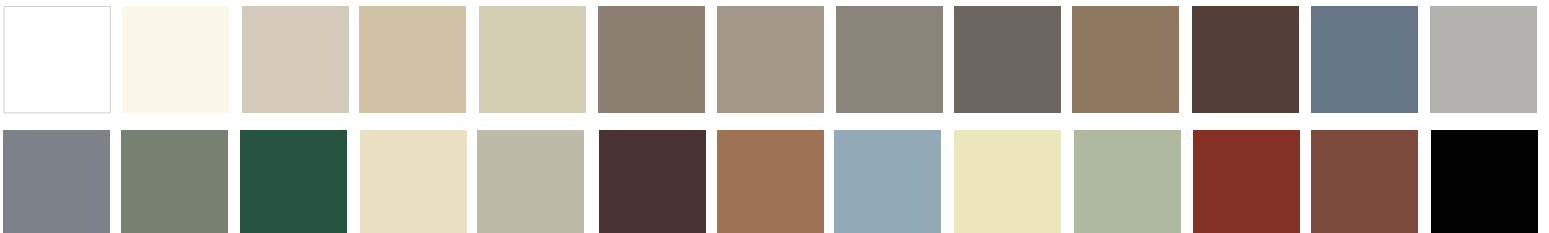
Introducing

ALUMINUM SOFFIT AND RAIN CARRYING SYSTEMS



- Available in complete aluminum product line
- Paint finish enhanced with DuPont™ Teflon®
- Unmatched 25 year chalk & fade resistance
- Ceramic Hybrid Finish enhances cleanability
- Scratch & mar resistance
- Large color selection including 26 colors
- Unparalleled in terms of quality & finish
- Competitive pricing

Platinum
ACCESSORIES™
By United State Seamless®



TEFLON® is a registered Trademark of E.I. du Pont Nemours Company and is used under license by United States Seamless®, Inc.

New

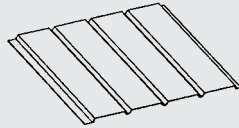
PLATINUM ALUMINUM SOFFIT AND RAIN CARRYING PRODUCT INFORMATION

The long term exterior weathering performance makes United States Seamless Platinum Accessories™ products your cost effective choice for residential and commercial applications. Ideal use on all building components especially Soffit and Rain Carrying Systems. The Platinum Accessories™ Aluminum coating features our ceramic hybrid paint finish enhanced with DuPont™ Teflon® that also improves scratch and metal marking resistance. Platinum Accessories™ Aluminum products carry a limited lifetime warranty.



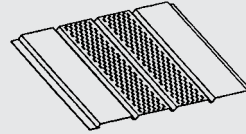
Aluminum Soffit & Accessories

Profile
Product ID
Specifications



16" Solid Soffit Panel

12' in length • 16" wide
.019 thickness • 240 square ft./ctn.
15 pcs./ctn. • 76 lbs.



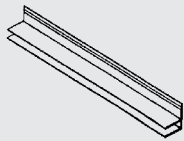
16" Center Vented Soffit Panel (NFOA)

12' in length • 16" wide
.019 thickness • 240 square ft./ctn.
15 pcs./ctn. • 76 lbs.



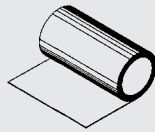
3/8" J Channel Soffit Starter Strip

12' in length
300 linear ft./ctn.
25 pcs./ctn. • 18 lbs.



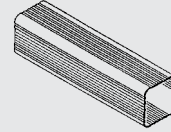
F Channel Soffit Starter Strip

12' in length
300 linear ft./ctn.
25 pcs./ctn. • 30 lbs.



Aluminum Trim Coil

24" x 50"
1 coil/ctn.
28 lbs.



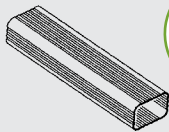
3"x3" Downspouts

10' in length
80 linear ft./ctn.
8 pcs./ctn. • 24 lbs.



3"x3" Elbows

30 pcs./ctn.
11 lbs.



2"x3" Downspouts & 3"x4" Downspouts

10' in length
100 linear ft./ctn.
10 pcs./ctn. • 26 lbs. • 35 lbs.



2"x3" Elbows & 3"x4" Elbows A & B

30 pcs./ctn. • 20 pcs./ctn.
7 lbs. • 10 lbs.



Outside Miter 5" & 6" K-Style - Box

20 pcs./ctn.
6 lbs. • 7 lbs.
**6" Primed Only*



Inside Miters 5" & 6" K-Style - Box

20 pcs./ctn.
6 lbs. • 7 lbs.
**6" Primed Only*



End Caps 5" & 6" Right & Left

50 pcs./ctn.
2.5 lbs. • 3 lbs.
**6" Primed Only*



Gutter Coil

11 7/8" • 13 1/4" • 15"
1 coil
350 lbs. • 400 lbs. • 450 lbs.
(Weight is approximate)



Mini Gutter Coil

11 7/8" • 15"
150' in length • 1 coil
65 lbs. • 85 lbs.
(Weight is approximate)

